

### Life and livelihoods.

Publication of the 'Summary of Significant Water Management Issues consultation document, Regulation 12(1)(b) of the Water Environment (Control Framework Directive) (England and Wales) Regulations 2003.

The Environment Agency has today published a consultation document for the Thames River Basin District. The 'Summary of Significant Water Management Issues' document is the second in a series of three publications for public consultation, allowing anyone with an interest in the water environment or the River Basin Planning process the opportunity to comment.

The consultation runs until 24 January 2008 and any person may make representations to us regarding the significant water management issues by completing the online response form on the Environment Agency's web site [www.environment-agency.gov.uk/wfd](http://www.environment-agency.gov.uk/wfd).

Alternatively, representations can be made via email to [thamesrbd@environment-agency.gov.uk](mailto:thamesrbd@environment-agency.gov.uk), or in writing to: Lydia Wyeth, Environment Agency, Kings Meadow House, Kings Meadow Road, Reading, Berkshire, RG1 8DQ. Copies of the 'Summary of Significant Water Management Issues' publications are also available on our web site or by contacting Lydia Wyeth at the Reading address.

Details of the Thames River Basin District and liaison panel memberships are available on the Environment Agency's web site at [www.environment-agency.gov.uk/wfd](http://www.environment-agency.gov.uk/wfd) or via phone, on 08708 506 506.

31 July 2007

Robert Runcie  
Regional Director, Thames Region  
Environment Agency



## Your Photo on Canvas

10" X 14" : £36 + 2.50 p+p  
14" X 20" : £44 + 2.50 p+p  
20" X 29" : £55 + 2.50 p+p  
36" X 48" : £90 + 2.50 p+p

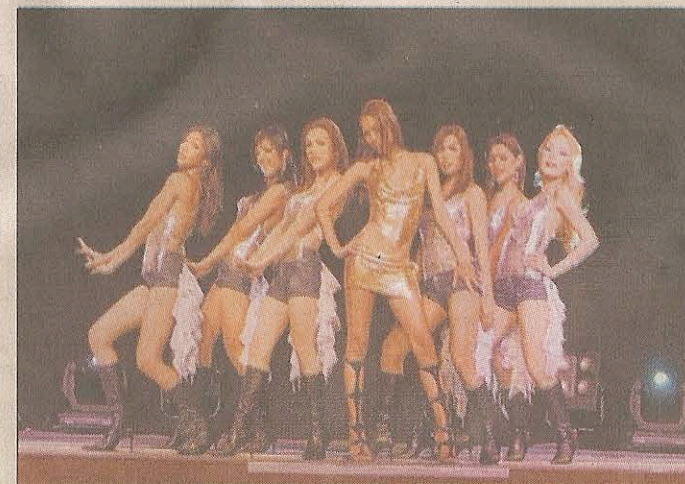
Pop Art Print of You also available.  
As are other size canvases.  
Gift vouchers also available.

[www.tsgallery.co.uk](http://www.tsgallery.co.uk) 01233 630 337  
[info@tsgallery.co.uk](mailto:info@tsgallery.co.uk)

## ART AND ABOUT THE VIEW FINDER

**What:** Designed by architect Will Schofield as part of the Festival Of Xtreme Building, The View Finder has been created through workshops with children from five local schools and in collaboration with the local community in Sheldon Heath. In a variation on the camera obscura, Schofield has constructed an urban hide – an enclosed, darkened, cube-shaped room with carefully positioned holes in its walls – which afford views over parts of Birmingham as selected by the participating children.

**Why:** The festival's city-centre site (on Moor Street Queensway) is a tatty triangle of wasteland which will be allegedly valued at £6billion over the next ten years. In the hands of the festival's visionary architects, it has become a miniature zone of personal enlightenment, almost like the forgotten motorway intersection in J G Ballard's novel Concrete Island. The View Finder filters out all distracting visual noise, allowing visitors to appreciate distilled moments of urban beauty. Until September, anyway, when the site will be emptied and the weeds will reclaim their territory once more. *Philip Holyman*  
[www.festival-xtremebuilding.org.uk](http://www.festival-xtremebuilding.org.uk)



Stepping out: The Lady Boys turn on the glitz

## TO SEE OR NOT TO SEE? THE PROS AND CONS OF THE LADY BOYS OF BANGKOK

**Pro:** If you want some razzle dazzle, this is definitely the show for you. Sequins, feathers and high heels are the order of the evening, presented in a shower of glitter and showmanship.

**Con:** Or maybe that's show 'woman'

dressed as a woman playing the role of a man dressed as a woman playing... ow, my head hurts.

**Pro:** It's a touch saucy and a little bit cheeky, but this is very much about men parading around as women and nothing more X-rated than that.

